

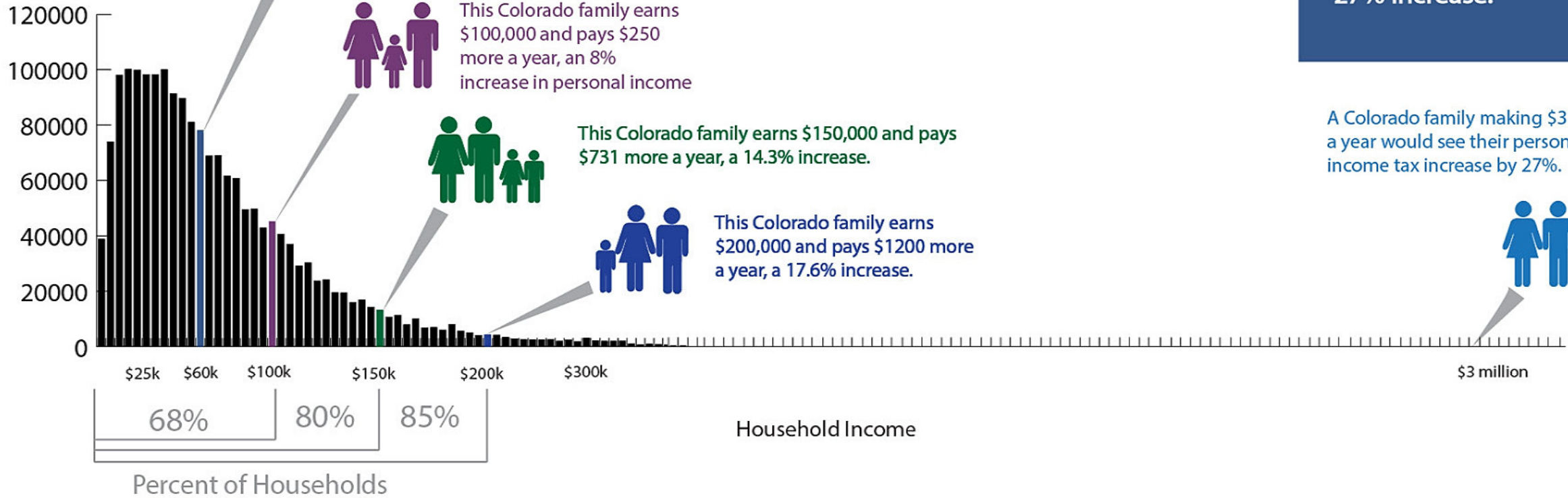
A66 Taxes and Colorado's Households

Middle Class Coloradans will see a 8% increase in personal income tax.

Those in upper-middle-class (\$100K to \$150K) could see there rates increase between 8% and 14% depending on their income.

A family would have to have more annual income than 99.9% of Americans to see a 27% increase.

Number of Households



Distribution of Colorado Households by Income

Source: Analysis of American Community Survey PUMS data;
Tax Policy Center's Baseline Distribution of Cash Income and Federal Taxes under Current Law by Cash Income Percentile.